

2023-2024



The Brand Says It All.

The Brand Says It All.



PERFECT TOOLS



Established in 2005, The Perfect Tools brand is counted amongst renowned manufactures and exporters of an extensive range of Hand Tools and Power Tools, which caters to the requirements of OEMs, engineering & construction industries.

The Perfect Tools brand stands for tools of best quality for industrial and professional applications at an optimal relation of price and performance. All tools are produced of best selected steel, with modern manufacturing facilities.

Innovative ways of thinking and dealing with specialized people and continues improvement of the products with reference to function and design, as well as high delivery capability together with a comprehensive service are an important element of the Perfect Tools quality consciousness.

The Perfect Tools brand is proud of its reputation for excellence. We are dedicated to continually testing, designing and improving our products to ensure quality and maximum function.

INDEX

ITEMS	PAGE
Allen Key	02
Bar Bending Key, Bench Vices, Pipe Vices & Die Set	05
Cutter Knives & Blades	09
Chisels	13
Cutting Disc / Drill Bits	19
Gun, Capulla, Revitors & Heating Torches	27
Hacksaws & Handsaws	38
Hammers	44
Tapes, Levels & Brackets	56
Pipe Wrenches	61
Bolt Cutters, Cable Cutters, Wire Cutters & Pipe Cutters	65
Axe / Pickaxes	76
Paint Brushes & Rollers	78
Wire Brushes	86
Spanners and Wrenches	92
Screw Drivers	99
Scissors	101
Garden Rakes / Forks & Sickles	103
Shovels	105
Trovels & Scrappers	108
Hand Trucks - Trolleys & Wheel Barrows	118

The Brand Says It All.



ALLEN KEYS



BLACK COATED LONG L HEX KEY SET WITH POUCH

- Heat treated, tempered alloy steel provides high strength and resistance to rotational distortion.
- All hex keys are precision formed to exact dimensional tolerances for precise fit.
- Longer length keys for additional leverage and extended reach.
- Pouch conveniently organizes and stores hex keys.
- Sizes included 3/8", 5/16", 1/4", 7/32", 3/18", 5/32", 9/64", 1/8", 7/64", 3/32", 5/64", 1/16", 1/20".

AL53A-PT

13PCS (40 SETS/CTN)



BLACK COATED SHORT ARM TORX KEY SET WITH POUCH

- Heat treated, tempered alloy steel provides high strength and resistance to rotational distortion.
- All hex keys are precision formed to exact dimensional tolerances for precise fit.
- Pouch Conveniently Organizes and Stores Hex Keys.
- Sizes included T-9, T-10, T-15, T-20, T-25, T-27, T-30, T-40.

AL65C-PT

8PCS (100 SETS/CTN)

The Brand Says It All.



BLACK COATED SHORT L HEX KEY SET WITH METAL CLIP

- Heat treated, tempered alloy steel provides high strength and resistance to rotational distortion.
- All hex keys are precision formed to exact dimensional tolerances for precise fit.
- Sizes included 1.5 , 2 ,2.5 ,3 ,4 ,5 ,6 ,8, 10.

AL52D-PT

9PCS (50SETS/CTN)



CHROME COATED SHORT ARM TORX KEY SET WITH METAL CLIP

- Heat treated, tempered alloy steel provides high strength and resistance to rotational distortion.
- All hex keys are precision formed to exact dimensional tolerances for precise fit.
- Extra chrome finish for protection against rust/ corrosion.
- Sizes included T6, T7, T8, T9, T10, T15, T20, T25.

AL54A-PT

8PCS/SET (60SETS/CTN)

The Brand Says It All.



CHROME COATED SHORT ARM TORX KEY SET WITH METAL CLIP

- Heat treated, tempered alloy steel provides high strength and resistance to rotational distortion.
- All hex keys are precision formed to exact dimensional tolerances for precise fit.
- Extra chrome finish for protection against rust/ corrosion.
- Sizes included T9, T10, T15, T20, T25, T27, T30, T40.

AL54B-PT

8PCS/SET (60SETS/CTN)



CHROME COATED LONG L HEX KEY SET WITH POUCH

- Heat treated, tempered alloy steel provides high strength and resistance to rotational distortion.
- All hex keys are precision formed to exact dimensional tolerances for precise fit.
- Longer length keys for additional leverage and extended reach.
- Extra chrome finish for protection against rust/ corrosion.
- Pouch conveniently organizes and stores hex keys.
- Sizes included 1.5, 2, 2.5, 3, 4, 5, 6, 8, 10.

AL52B-PT

9PCS (40SETS/CTN)

The Brand Says It All.



BAR BENDING KEYS, BENCH VICES, PIPE VICES AND DIE SET



TWO SIDED GALVANISED BAR BENDING KEY -

- Natural sturdy steel finish provided for a rough grip during heavy industrial usage.
- Key made of fully hardened railway steel for durability and additional strength.

BBK16A-PT

6X8X250 / 100PC/CTN

BBK17A-PT

8X10X400 / 50PC/CTN

BBK18A-PT

10X12X500 / 40PC/CTN

BBK19A-PT

12X14X600 / 25PC/CTN

BBK20A-PT

14X16X700 / 20PC/CTN



HEAVY DUTY BENCH VISE WITH SWIVEL BASE -

- Hardened alloy steel pipe jaws provided for powerful grips

BV40B-PT

4" [8.50KG] (1PC/CTN)

BV41B-PT

5" [11.0KG] (1PC/CTN)

BV42B-PT

6" [15.0KG] (1PC/CTN)

BV43B-PT

8" [20.50KG] (1PC/CTN)

The Brand Says It All.



INDUSTRIAL MALLEABLE IRON PIPE VICE

- Product is made of ductile/ malleable iron and have hardened, high carbon steel jaws for toughness and long life.
- Special teeth permits the strongest jaw-to-jaw gripping of pipe for high-torque applications like threading.
- Product easily converts from right- to left-hand operation and back, making it simple to work around obstructions or to accommodate right- or left-hand user preference.

BV36A-PT

1" (6PC/CTN)

BV37A-PT

2" (4PC/CTN)

BV38A-PT

3" (2PCS/CTN)



RATCHET DIE SET IN BMC CASE

- Jaw clutch prevents jamming, adjusts for tapered or straight threads, cam-type work holder.
- Ratchet system allows fast and easy of die-heads.
- Die-heads can be positioned in ratchet from either side.
- Defined design keeps chips out and ensures extra smooth operation.

DST14A-PT

1/2", 3/4", 1", 1-1/4" (4SETS/CTN)

The Brand Says It All.



**3-LEG REVERSIBLE GEAR PULLER -
GERMANY MODEL**

- Heavy-duty pattern, silver-colored 3 puller legs to remove/install dears, bearings and pulleys on autos, trucks, agricultural and construction equipment.
- Puller legs to be used on both sides, one side with wide and the other side with narrow hooks, 172-200: wide hooks, one end slotted.
- Legs produced with High grade industrial railway steel.

GP01A-PT

4" / 36PC/CTN

GP02A-PT

6" / 24PC/CTN

GP03A-PT

8" / 12PC/CTN

GP04A-PT

10" / 9PC/CTN

GP05A-PT

12" / 6PC/CTN

GP06A-PT

14" / 6PC/CTN

GP07A-PT

16" / 6PC/CTN

GP09A-PT

20" / 6PC/CTN

The Brand Says It All.



TILE CUTTING PEN

- Steel Body With Carbide Tip And Pocket Clip
- For Making On Hard And Soft Materials Including Steel And Ceramics

TL54A-PT

8" - 60 PC/CT



TILE CUTTER U TYPE (6)

TL54B-PT

8" (60PC/CTN.)

The Brand Says It All.



CUTTER KNIVES & BLADES



3-BLADE AUTO-LOAD SNAP OFF KNIFE

- Made with stainless steel and high impact components.
- Removable blade snapper for removal of worn segment, with 3 extra blades.
- Comfortable bi-material slider with a full body tpr grip provided for soft handling.
- Instant blade release functionality for quick blade changes.

CK38A-PT

18MM (144PC/CTN)



STANDARD SNAP OFF KNIFE

- Made with stainless steel and high impact components.
- Removable blade snapper included in cap of knife.
- Blade sections snap off to provide fresh, sharp cutting points.

CK39A-PT

9MM (192PC/CTN)

CK44A-PT

18MM (96PC/CTN)

The Brand Says It All.



INDUSTRIAL SELF- RETRACTING KNIFE WITH FULL BODY TPR GRIP.

- Spring loaded blade retracts automatically when pressure on slide button is released.
- Designed to be used in opening cartons.
- Blade is only exposed when the knife is in use.
- Interlocking nose secures blade between knife halves.
- 5 spare blades provided for quick change.

CK40A-PT

19MM (72PCS/CTN)



10-BLADE INDUSTRIAL AUTO-LOAD KNIFE

- Easy access blade storage holds upto 10 blades for fast and easy blade change.
- Auto-load button provided to allow the user to replace dull blades in seconds.
- Interlocking blade sliders so that only 1 is extended at a time.
- Rubber comfort grip minimizes fatigue and reduces slippage.

CK41A-PT

19MM (72PC/CTN)

The Brand Says It All.



BASIC AUTO-LOAD ROTARY KNIFE

- Auto-load button provided to allow the user to replace dull blades in seconds.
- Comfortable bi-material slider with a full body tpr grip provided for soft handling.
- Instant blade release functionality for quick blade changes.
- Interlocking blade sliders so that only 1 is extended at a time.

CK42A-PT

28MM (288PC/CTN)

CK43A-PT

45MM (144PC/CTN)



PREMIUM SPARE BLADES

- Replacement blades with 8 cutting points.

CK45A-PT

9MM (576PCS/CTN)

CK46A-PT

18MM (288PCS/CTN)

The Brand Says It All.

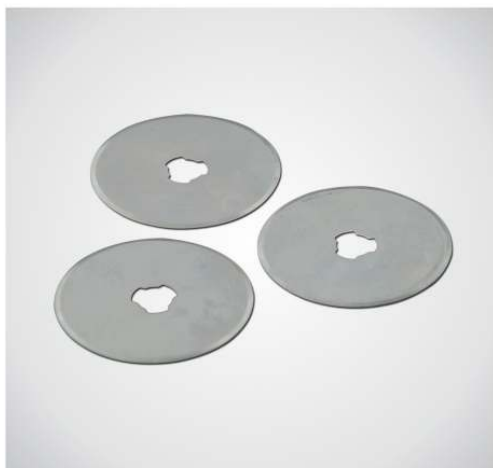


INDUSTRIAL TRAPZIUM SPARE BLADES

- Induction double hardened edge is engineered for precision cuts on drywall, ceiling tiles, wallboards and similar materials.
- 100% longer life on average compared to other heavy blades, resulting in far fewer blade changes.

CK47A-PT

19MM (576PCS/CTN)



BASIC ROTARY SPARE BLADES

- Rounded shape helps reduce risk of accidental cuts.
- Regular duty round blade for light materials, paper, cardboard.

CK48A-PT

45MM (960PCS/CTN)

CK49A-PT

28MM (960PCS/CTN)

The Brand Says It All.



CHISELS



HIGH-CARBON ALLOY STEEL FLAT CHISEL WITH CIRCULAR TPR GRIP

- Unique 19mm thicker blade powder coated to prevent any rust, corrosion and chipping arising from heavy industrial hitting.
- Curcular non- breakable abs grip provided for additional safety during usage.

C78A-PT

10"X19MM (36PCS/CTN)

C80A-PT

12"X19MM (36PCS/CTN)

C82A-PT

14"X19MM (24PCS/CTN)

C84A-PT

16"X19MM (24PCS/CTN)



HIGH-CARBON ALLOY STEEL POINTED CHISEL WITH CIRCULAR TPR GRIP

- Unique 19mm thicker blade powder coated to prevent any rust, corrosion and chipping arising from heavy industrial hitting.
- Curcular non- breakable abs grip provided for additional safety during usage.

C79A-PT

10"X19MM (36PCS/CTN)

C81A-PT

12"X19MM (36PCS/CTN)

C83A-PT

14"X19MM (24PCS/CTN)

C85A-PT

16"X19MM (24PCS/CTN)

The Brand Says It All.



HARDENED CHROME CARBON-STEEL FLAT CHISEL WITH TPR GRIP

- Anti-Rust Short series blade designed for additional strength and control.
- Smooth TPR grip provided with a steel striking cap for use with steel-headed hammer for Multi-purpose application.

C86A-PT

1/4" (6MM) (72PCS/CTN)

C87A-PT

3/8" (10MM) (72PCS/CTN)

C88A-PT

1/2" (13MM) (72PCS/CTN)

C89A-PT

5/8" (16MM) (72PCS/CTN)

C90A-PT

3/4" (19MM) (72PCS/CTN)

C91A-PT

1" (25MM) (72PCS/CTN)

C92A-PT

1-1/4" (32MM) (72PCS/CTN)

C93A-PT

1-1/2"(38MM)(72PCS/CTN)

C103A-PT

2" (50MM) (36PCS/CTN)



INTERCHANGEABLE CRV BLADE CHISEL SET WITH GRIP

- Extreme high density chrome vanadium blades provided for heavy use against wood, concrete and various other materials.
- Special adjustable knob designed for quick switch of blade suiting the industrial application.
- Extra smooth chrome finish provided on blade for protection against friction or corrosion.

C94A-PT

6PCS SET (10SET/CTN)

The Brand Says It All.



INDUSTRIAL DEEP CUT FILES WITH WOODEN HANDLE

- Made out of M2 railway steel, deep cut used for sharpening and edges applications.
- Deep cut files need less effort for filling and also give good surface finish
- 8" Flat, Half & Round type provided
- Comfortable wood round grip provided

F60A-PT

3PC SET (25SETS / CTN.)



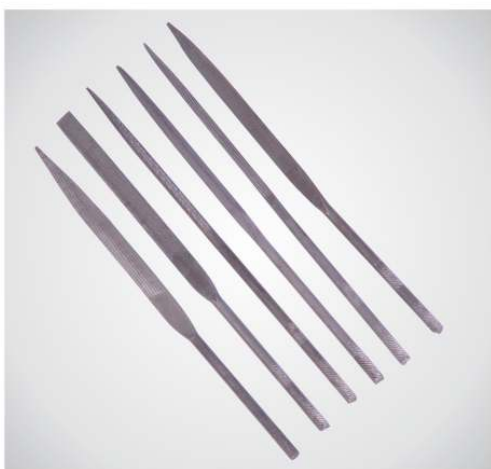
INDUSTRIAL DEEP CUT FILES SET WITH WOODEN HANDLE

- Made out of M2 railway steel, deep cut used for sharpening and edges applications.
- Deep cut files need less effort for filling and also give good surface finish
- 8" Flat, Half, Round, Square & Triangle type provided
Comfortable wood round grip provided

F61A-PT

5PC SET (15SETS/CTN)

The Brand Says It All.



INDUSTRIAL NEEDLE FILES SET WITHOUT HANDLE

- Needle files are ideal for use in hard-to-reach places, e.g. ornaments, casting patterns, carved woodwork and sculptures
- Because of their forged shanks, needle files can be used with or without a file handle
- Due to their high surface hardness grade, CORINOX files are extremely wear-resistant and tough
- 6.5" Flat, Triangle, Half Round, Round, Square & Three Square®

F62A-PT

6PC SET (100SETS / CTN)



CARBON STEEL PIN CHISEL SET

- Short chisels with sharp edges specifically designed for light-weight DIY application.

C95A-PT

6PCS SET (20SET/CTN)

C96A-PT

12PCS SET (10SET/CTN)

The Brand Says It All.



HOLLOW PUNCH SET

- Precision ground flutes and cutting edges
- Carbon steel construction
- Chrome plated to resist corrosion
- Knurled shanks
- Includes storage pouch

C159A-PT

9PC SET (40 SETS/CTN)

C160A-PT

12PC SET (20 SETS/CTN)



LETTER PUNCH SET & NUMBER PUNCH SET

- Make permanent imprints in metal, plastic, leather, and wood
- Made of extremely strong, heavy-duty Chrome Vanadium for powerful impact and long life
- This letter stamp set contains letters A-Z
- This letter and number stamp set contains numbers 0-9
- Comes in a beautiful green case to keep it neat and organized for storage

PUN22A-PT

27PC SET (20 SETS / CTN.)

PUN21A-PT

9PCS SET (40SETS / CTN)

The Brand Says It All.



SHOVEL



SUPREME DOUBLE-COLOR WRECKING BAR

- Made from high grade forged steel
- Each bar has a curved chisel end and a swan neck end with nail slot
- Ideal for opening packing cases and removing nails, as well as general leverag

WKB26A-PT

26" (10PC/CTN)

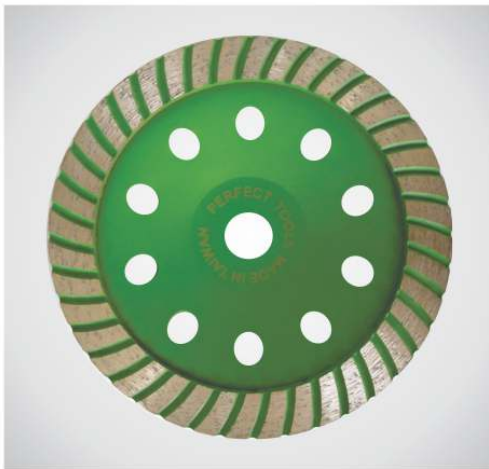
WKB27A-PT

32" (10PC/CTN)

WKB28A-PT

38" (10PC/CTN)

The Brand Says It All.



CONCRETE / GRANITE / MARBLE / BRICK
GRINDING WHEEL

D313A-PT

4" (50/PC/CT)

D314A-PT

4.5" (50/PC/CT)

D315A-PT

5" (50/PC/CT)

D316A-PT

7" (50/PC/CT)



ALUMINIUM AND HARD WOOD CUTTING DISC

D317A-PT

4" X 40T (100PC / CT)

D318A-PT

4.5" X 40T (100PC / CT)

D319A-PT

7" X 40T (50PC / CT)

D320A-PT

9" X 40T (25PC / CT)

D321A-PT

14" X 100T (10PC / CT)

The Brand Says It All.



**SUPER THIN TURBO DISC
(FOR CERAMIC, TILE, PORCELAIN TILE)**

D322A-PT

4" (7x 22-23) - 100PC/CT

D323A-PT

4.5" (7x 22-23) - 100PC/CT

D324A-PT

7" (7x22-23) - 50PC/CT

D325A-PT

9" (7x22-23) - 25PC/CT

The Brand Says It All.



SDS ELECTRIC HAMMER DRILL BIT (5,10)

DB409A/B-PT 5x110mm (500PC/CTN)	DB410A-PT 5x160mm (500PC/CTN)
DB411A-PT 5.5x160mm (250PC/CTN)	DB412A-PT 6x110mm (500PC/CTN)
DB413A-PT 6x160mm (500PC/CTN)	DB414A-PT 6x210mm (500PC/CTN)
DB415A-PT 6x260mm (250PC/CTN)	DB416A-PT 8x110mm (500PC/CTN)
DB417A-PT 8x160mm (500PC/CTN)	DB418A-PT 8x310mm (250PC/CTN)
DB419A-PT 10x110mm (500PC/CTN)	DB420A-PT 10x160mm (250PC/CTN)
DB421A-PT 10x210mm (250PC/CTN)	DB422A-PT 10x310mm (250PC/CTN)
DB423A-PT 10x350mm (50PC/CTN)	DB424A-PT 12x110mm (500PC/CTN)
DB425A-PT 12x160mm (500PC/CTN)	DB426A-PT 12x310mm (100PC/CTN)
DB427A-PT 13x310mm (50PC/CTN)	DB428A-PT 16x160mm (250PC/CTN)
DB429A-PT 16x210mm (250PC/CTN)	DB430A-PT 16x310mm (100PC/CTN)
DB431A-PT 18x310mm (50PC/CTN)	DB432A-PT 18x350mm (50PC/CTN)

The Brand Says It All.



HSS DRILL BIT BLACK FINISH

DB373A-PT

2mm (5000PC/CTN)

DB374A-PT

3mm (5000PC/CTN)

DB375A-PT

3.5mm (5000PC/CTN)

DB376A-PT

4mm (2000PC/CTN)

DB377A-PT

4.5mm (2000PC/CTN)

DB378A-PT

5mm (1000PC/CTN)

DB379A-PT

6mm (1000PC/CTN)

DB380A-PT

7mm (500PC/CTN)

DB381A-PT

8mm (500PC/CTN)

DB382A-PT

9mm (500PC/CTN)

DB383A-PT

10mm (500PC/CTN)

DB384A-PT

11mm (250PC/CTN)

DB385A-PT

12mm (250PC/CTN)

DB386A-PT

13mm (250PC/CTN)

DB387A-PT

14mm (100PC/CTN)

DB388A-PT

16mm (100DOZ/CTN)

DB389A-PT

18mm (100PC/CTN)

DB390A-PT

20mm (100PC/CTN)

The Brand Says It All.



SCREW DRIVER



HSS DRILL BIT GOLD (TIN COATED) FINISH

DB391A-PT

2mm (5000PC/CTN)

DB392A-PT

3mm (2000PC/CTN)

DB393B-PT

3.5mm (5000PC/CTN)

DB394A-PT

4mm (2000PC/CTN)

DB395A-PT

4.5mm (2000PC/CTN)

DB396B-PT

5mm (1000PC/CTN)

DB397A-PT

6mm (1000PC/CTN)

DB398A/B-PT

7mm (500PC/CTN)

DB399A-PT

8mm (500PC/CTN)

DB400A-PT

9mm (500PC/CTN)

DB401A-PT

10mm (500PC/CTN)

DB402A-PT

11mm (250PC/CTN)

DB403A-PT

12mm (250PC/CTN)

DB404A-PT

13mm (250PC/CTN)

DB405A-PT

14mm (100PC/CTN)

DB406A-PT

16mm (100PC/CTN)

DB407A-PT

18mm (100PC/CTN)

DB408A-PT

20mm (100PC/CTN)

The Brand Says It All.



COBALT DRILL BITS

DB361A-PT

3mm (2500PC/CTN)

DB362A-PT

3.5mm (2500PC/CTN)

DB363A-PT

4mm (2500PC/CTN.)

DB364A-PT

4.5mm (1000PC/CTN.)

DB365A-PT

5mm (1000PC/CTN.)

DB366A-PT

5.5mm (1000PC/CTN.)

DB367A-PT

6mm (1000PC/CTN.)

DB368A-PT

7mm (500PC/CT)

DB369A-PT

8mm (240PC/CTN.)

DB370A-PT

9mm (200PC/CTN.)

DB371A-PT

10mm (200PC/CTN.)

DB372A-PT

12mm (200PC/CTN.)

The Brand Says It All.



GUNS, CAPULLA, REVITORS & HEATING TORCHES



HEAVY- DUTY STAPLE GUN WITH GRIP - ENGLAND MODEL

- Easy-squeeze reduces hand fatigue.
- Hi/low power lever for hard and soft materials.
- Anti-jam mechanism saves time on the job.
- Bottom-loading, easy slide, full-stick staple load.
- Chrome plated body for durability and protection against rust.
- Comes with 2 spare boxes of 4-14mm staple pins

G56C-PT

4-14mm PINS / 400 STAPLE PINS
20PCS/CTN



ALL-STEEL INDUSTRIAL STAPE GUN - ENGLAND MODEL

- Heavy-duty with convenient handle-lock for storage.
- Bottom-loading, easy slide, full-stick staple load.
- Chrome plated handle for durability and protection against rust.
- Comes with 2 spare boxes of 4-14mm staple pins.

G55B-PT

4-14mm PINS / 400 STAPLE PINS
20PCS/CTN

The Brand Says It All.



3-IN-1 METAL STAPLE GUN/ BRAD NAILER/ CABLE TACKER

- Easy-squeeze product works overtime as a staple gun, brad nailed and a cable tacker.
- All metal body with extra chrome plating for usage against heavy material and protection against corrosion.
- Hi/low power lever for hard and soft materials.
- Anti-jam mechanism saves time on the job. Bottom-loading, easy slide, full-stick staple load.
- Comes with 3 spare boxes of 4-14mm staple pins

G67A-PT

4-14MM PINS / 12SET/CTN



SPARE PINS FOR TP STAPLE GUNS

- Extra chrome plated to protect against rust
- Heavy steel used for longer durability
- Used in Staple Guns G56A/ G55B/ G67A

PI05B-PT

8MM (100BOX / CTN)

PI12A-PT

12MM (100BOX / CTN)

PI11A-PT

10MM (100BOX / CTN)

PI13A-PT

14MM (100BOX / CTN)

The Brand Says It All.



HALF-BODY AUTOMATIC CAULKING GUN - SWEDEN MODEL

- Use to apply adhesives, caulking compounds and lubricants in 1 to 5-gallon containers.
- Half-body caulking gun has 9 in. Spouted drop-in cartridges to improve job speed and ease of use.
- With built-in poker/ cutter and ratchet grip.
- Powder coated steel frame resists corrosion.
- Quick release thumb lever.

SI30A-PT

9" / 24PC/CTN



HALF-BODY STANDARD CAULKING GUN - ENGLAND MODEL

- Use to apply adhesives, caulking compounds and lubricants in 1 to 5-gallon containers.
- Ratchet style compression rod with ladder hook, for use with all 9" cartridges.
- Built-in spout cutter, seal puncture tool and contoured trigger.
- Powder coated steel frame resists corrosion.
- Quick release thumb lever

SI30C-PT

9" / 24PC/CTN

The Brand Says It All.



HIGH-POWER SINGLE COMPONENT SILICON GUN

- For medium - high viscosity materials.
- Very powerful 18:1 trigger for easy dispensing.
- Very good build quality - designed with the professional in mind for a high service life

SI55A - PT

11" (12PC/CTN)



STEEL SILICON GUN

- Heavy Duty Cartridge Gun, Specifically designed to withstand the rigours of everyday use
- High thrust trigger action
- For top quality performance and long life

SI54A-PT

9.5" (36PC / CTN)

The Brand Says It All.



CHROME PLATED HVLV SPRAY GUN WITH UPPER NYLON CUP - SPAIN MODEL.

- High performance center post gravity fed hvlv gun with low air consumption and superior atomization.
- Heavy brass coated head provided for easy and smooth performance during long-hour usage.
- Included 680ml nylon cup and 2mm nozzle filter.
- Chrome finish gurantees protection against rust during usage.

G65A-PT

20PC/CTN



CHROME PLATED COMPACT SPRAY GUN WITH LOWER STEEL CUP - SPAIN MODEL

- A lightweight gun with high transfer efficiency control.
- Included 1000ml bottom cup and 1.7mm nozzle filter.
- Chrome finish gurantees protection against rust during usage.

G66A-PT

10PC/CTN

The Brand Says It All.

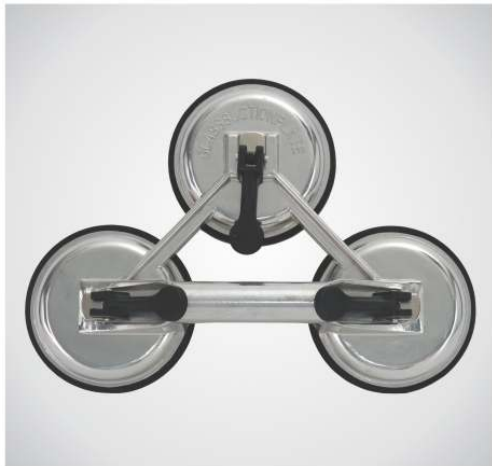


CARTON SEALER TAPE GUN - GERMAN MODEL

- Included with high/low tension and spatula.
- For easy and quick use with comfortable handle for stable grip.

G64A-PT

7.5-7.6CM / 36PC/CTN



THREE WAY SUCTION LIFTER

- Strong levers provided on each lifter for a guaranteed and durable lift of heavy industrial materials - mainly applied for heavy glass.
- Chrome plated finish provided on lifters for protection against rust and corrosion.

CPL05A-PT

50KGS (10PC/CTN)

CPL06A-PT

100KGS (10PC/CTN)

CPL07A-PT

150KGS (10PC/CTN)

The Brand Says It All.



LEVER GREASE GUN

- Air release either through loader fitting on the grease gun head or half turn of the head assembly
- Soft rubber grip on lever handle for comfortable operation
- Durable powder coated finish
- Complete with a choice of 6" (150 mm) steel extension or 12" (300 mm) flexible hose & standard 4 jaw coupler with ball check

GO1H-PT

15 oz. (10PC / CTN)



INDUSTRIAL BUCKET GREASER

- Volume Grease Pump designed for quick effortless greasing in applications requiring everyday lubrication such as greasing of excavators & other earth moving equipment, agricultural equipment, automotive applications etc.
- The Pump delivers upto 9 gms (0.30 oz.) of Grease per stroke which is twice the amount of grease discharge by any other pump
- Air release valve for easily removing trapped air from grease
- Piston handle fitted with steel grease extension and professional coupler

B41A-PT

16LTR (2PC / CTN)

The Brand Says It All.



BLACK TEFLONE RIGHT-ANGLE HAND REVITOR

- Customized spring loaded handle ejects revid stem automatically for medium-sized applications
- Sturdy long-handle provided to make revider easy to squeeze.

HR24A-PT

10.5" (24PC/CTN)



CONTRACTOR GRADE FLEXIBLE HAND REVITOR

- Unique internal flex-spring attached within the handle to make revider easy to squeeze.
- Rugged contractor-grade metal construction in body with abs handle for durability.

HR25A-PT

32" 12PC/CTN

The Brand Says It All.



GLUE GUN

- For bending wire loops
- Round, short jaws; finely ground
- Chrome vanadium electric steel, forged, oil-hardened

G62B-PT

100W (24PCS/CTN)



COMPATIBLE SOLDERING IRON

- For high heat applications requiring maximum heat storage
- Compact, lightweight, with steel barrel and heat resistant handle
- Develops up to 720 degrees F.
- Pencil-point tip gets into the tightest places.
- Handle stays cool while you work.

EL31A-PT

60 WATT (50PCS / CTN)

The Brand Says It All.



INDUSTRIAL WELDING ELECTRODE HOLDER

- Electrode holders feature 98% copper construction to ensure proper conductivity.
- They are fully insulated and designed to offer a comfortable grip
- Efficient ball-point cable connection.

WE50A-PT

500AMP (25PC/CTN)

WE51A-PT

600AMP (25PC/CTN)



LPG HEATING TORCH WITH SINGLE BURNER

- The torch is suitable for bituminous material fusion, for roofing and other domestic works such as streets and ramps De-freezing, paint removing and surfaces picking.
- Iron Tube with heating nozzles.
- Used for applications requiring large volumes heat.
- The regulation lever enables to adapt the flame intensity in a very sensible and precise way.

WE30A-PT

35MM (30PC/CTN)

WE31A-PT

45MM (40PC/CTN)

WE32A-PT

60MM (30PC/CTN)

WE33A-PT

76MM (30PC/CTN)

WE31B-PT

25MM, 35MM & 45MM BURNER
40PCS/CTN

The Brand Says It All.



HACKSAWS & HANDSAWS



GREY COATED ALLOY STEEL JUNIOR HACKSAW FRAME WITH BLADE

- Extra hss steel blade provided for medium - duty usage in wood, metal and aluminium cutting.

HCS31A-PT

6" (20DOZ/CTN)



BLACK POWDER COATED HACKSAW FRAME WITH ABS GRIP

- Bi-metal blade provided for flexible cutting in medium application for wood, metal and aluminium.

HCS32A-PT

12" (60PC/CTN)

The Brand Says It All.



HEAVY DUTY HACKSAW FRAME WITH 2 TPR GRIPS

- Strong steel structure provided in model for industrial usage with tpr grips provided on both sides for added advantage in gripping.
- 8% cobalt material included in hss blade to guarantee cutting under high density material.

HCS33A-PT

12"/830GRM / 24PC/CTN



CHROME PLATED HEAVY DUTY HACKSAW FRAME WITH ALUMINIUM HANDLE

- Strong steel structure with chrome finish provided to avoid rust during industrial usage.
- 8% cobalt material included in hss blade to guarantee cutting under high density material.

HCS33B-PT

12"/535GRM / 36PC/CTN

The Brand Says It All.



BI-METAL FLEXIBLE HACKSAW BLADE WITH SINGLE EDGE

- Cobalt 8% material provided to enable superior cutting for metal & wood.

HCB41A-PT

24TEETH (1000PC/CTN)

HCB40A-PT

18TEETH (1000PC/CTN)

BLACK TEFLONE POWDER COATED HANDSAW WITH TPR GRIP



DIY HACKSAW FRAME WITH STEEL HANDLE

- Round Steel structure base for easy usage on an everyday basis.
- Wide Steel grip in handle to suit daily operations.
- Bi- metal blade provided for various material cuttings.

HCS35B-PT

12" (60PC / CTN)

The Brand Says It All.



MULTI-PURPOSE HANDSAW WITH WOODEN HANDLE

- Extra anti-rust finish provided on blade to overcome rust in teeth during medium application usage.
- Firm wooden handle fixed with chrome plated revits to avoid any handle / blade separation during cutting.
- Hardwood handle provided comfort and control.

HS165A-PT

16" X 0.85MM / 6PCS/BOX
60PCS/CTN

HS166A-PT

18" X 0.85MM / 6PCS/BOX
60PCS/CTN

HS167A-PT

20" X 0.85MM / 6PCS/BOX
60PCS/CTN

HS168A-PT

22" X 0.85MM / 6PCS/BOX
60PCS/CTN



BLACK TEFLONE POWDER COATED HANDSAW WITH TPR GRIP

- Original teflon coating protects the blade with rust protection, abrasion protection and less friction while industrial usage.
- Sharp induction hardened teeth provided to cut deeper and faster, compared to other basic handsaws.
- Soft grip provided to add comfort for heavy usage.

HS165B-PT

16" 6PC/BOX
60PC/CTN

HS166B-PT

18" 6PC/BOX
60PC/CTN

HS167B-PT

20" 6PC/BOX
48PC/CTN

HS168B-PT

22" 6PC/BOX
48PC/CTN

The Brand Says It All.



HEAVY-DUTY STRAIGHT BLADE PRUNING SAW WITH GRIP

- Razor sharp teeth with 4 cutting angles provides fast, clean and extremely smooth cutting action.
- Study plastic flip-lock carrying case with belt clip is included.

HS169A-PT

12"/300MM / 48PCS/CTN



COMPACT FOLDING SAW WITH NON-SLIP RUBBERIZED HANDLE

- The non-slip rubberized handle provides a sure and comfortable grip even in the most difficult operating conditions.
- Rust-resistant, hard chrome-plated, taper-ground blade designed for quick and greater cutting efficiency.

HS170A-PT

7"/180MM / 36PCS/CTN

The Brand Says It All.



HAMMERS



BLACK MATT FINISH SLEDGE HAMMER HEAD ONLY

- Unique machine - finished round edges on both sides to stand against rust and metal chipping while industrial usage.

H451A-PT

4LB / 12PCS/CTN

H453A-PT

8LB / 6PCS/CTN

H455A-PT

12LB / 4PCS/CTN

H457A-PT

16LB / 2PCS/CTN

H459A-PT

20LB / 2PCS/CTN

H452A-PT

6LB / 6PCS/CTN

H454A-PT

10LB / 4PCS/CTN

H456A-PT

14LB / 4PCS/CTN

H458A-PT

18LB / 2PCS/CTN



INSULATED SPECIAL WOODEN MALLET HAMMER WITH WOODEN HANDLE

H497A-PT

70MM (6PC/BOX) (30PC/CTN)

The Brand Says It All.



BLACK MATT FINISH SLEDGE HAMMER WITH WOODEN HANDLE

- Unique Machine - finished round edges on both sides to stand against rust and metal chipping while industrial usage
- 1st grade wooden handle used to provide tough grip and durability for usage.

H519A-PT

2LB / 6PC/BOX) (24PC/CTN)

H499A-PT

4LB / 6PC/BOX 12PC/CTN

H501A-PT

8LB / 2PC/BOX / 6PC/CTN

H503A-PT

12LB / 2PC/CTN

H505A-PT

16LB / 2PC/CTN

H507A-PT

20LB / 2PC/CTN

H498A-PT

3LB / 6PC/ (BOX 12PC/CTN)

H500A-PT

6LB / 4PC/BOX 8PC/CTN

H502A-PT

10LB / 6PC/CTN

H504A-PT

14LB / 2PC/CTN

H506A-PT

18LB / 2PC/CTN



TWO - SIDE RUBBER MALLET HAMMER WITH WOODEN HANDLE

- Soft face hammers helps minimize marring and surface damage
- Faces are made of durable plastic that is ideal for the fine finished surfaces
- Hard Wooden handle for durability

H122A-PT

20MM/150PC/CTN

H124A-PT

30MM/150PC/CTN

H632A-PT

45MM/48PC/CTN

H123A-PT

25MM / 150PC /CTN

H631A-PT

40MM/60PC/CTN

H633A-PT

50MM/36PC/CTN

The Brand Says It All.



BLACK MATT FINISH SLEDGE HAMMER WITH FIBRE/ TPR GRIP HANDLE

- Unique machine - finished round edges on both sides to stand against rust and metal chipping while industrial usage.
- Superior imported fibre applied in the handle to avoid any breakage between head and handle.

H508A-PT

2LB / 6PC/BOX 24PC/CTN

H510A-PT

4LB / 6PC/BOX / 12PC/CTN

H512A-PT

8LB / 2PC/BOX / 6PC/CTN

H514A-PT

12LB / 4PC/CTN

H516A-PT

16LB / 2PC/CTN

H518A-PT

20LB / 2PC/CTN

H509A-PT

3LB / 6PC/BOX 12PC/CTN

H511A-PT

6LB / 4PC/BOX / 8PC/CTN

H513A-PT

10LB / 6PC/CTN

H515A-PT

14LB / 2PC/CTN

H517A-PT

18LB / 2PC/CTN

The Brand Says It All.



BLACK MATT FINISH STONNING HAMMER WITH FIBRE/ TPR GRIP HANDLE

- Special power coated head polished with semi - curved edges for extra protection during tough industrial application.
- Superior imported fibre applied in the handle to avoid any breakage between head and handle.

H482A-PT

1000GMS (6PC/BOX)
(24PCS/CTN)

H483A-PT

1500GMS (6PC/BOX)
(12PCS/CTN)

H484A-PT

2000GMS (6PC/BOX)
(12PCS/CTN)



BLACK MATT FINISH STONNING HAMMER WITH WOODEN HANDLE

- Special power coated head polished with semi - curved edges for extra protection during tough industrial application.
- 1st grade wooden handle with an extra metal clip protector under head, to provide tough grip for durable usage.

H477A-PT

1000GMS (6PC/BOX)
(24PCS/CTN)

H478A-PT

1500GMS (6PC/BOX)
(12PCS/CTN)

H479A-PT

2000GMS (6PC/BOX)
(12PCS/CTN)

The Brand Says It All.



BLACK INSULATED RUBBER MALLET HAMMER WITH WOODEN HANDLE

- Special nail protector provided on the head to avoid rubber breakage while industrial usage.

H431A-PT

8 OZ / 12PCS/BOX
36PC/CTN

H432A-PT

12 OZ / 6PCS/BOX
36PC/CTN

H433A-PT

16 OZ / 6PCS/BOX
24PC/CTN

H434A-PT

24 OZ / 6PCS/BOX
24PC/CTN

H435A-PT

32 OZ / 4PCS/BOX
12PC/CTN



BLACK INSULATED RUBBER MALLET HAMMER WITH FIBRE/ TPR GRIP HANDLE

- Special nail protector provided on the head to avoid rubber breakage while industrial usage

H490A-PT

8 OZ / 12PC/BOX
36PC/CTN

H491A-PT

12 OZ / 6PC/BOX
36PC/CTN

H492A-PT

16 OZ / 6PC/BOX
24PC/CTN

H493A-PT

24 OZ / 6PC/BOX
24PC/CTN

H435B-PT

32OZ / 4PCS/BOX
12PC/CTN

The Brand Says It All.



BLACK MATT FINISH CHIPPING HAMMER WITH WOODEN HANDLE

- Special power coated head polished with straight pointed edges at both sides for extra protection.
- 1st grade wooden handle with an extra metal clip protector under head, to provide tough grip for durable usage.

H439A-PT

500GMS / 6PCS/BOX
36PCS/CTN)



BLACK MATT FINISH CHIPPING HAMMER WITH FIBRE/ TPR GRIP HANDLE

- Special power coated head polished with straight pointed edges at both sides for extra protection.
- Superior imported fibre applied in the handle to avoid any breakage between head and handle.

H440A-PT

500GMS / 6PCS/BOX / 36PCS/CTN

The Brand Says It All.



BLACK MATT FINISH MECHANIST HAMMER WITH FIBRE/ TPR GRIP HANDLE

- Special power coated head polished with curved edges for extra protection during tough industrial application.
- Superior imported fibre applied in the handle to avoid any breakage between head and handle.

H445A-PT

500GMS (6PCS/BOX)
(36PCS/CTN)

H622A-PT

800GSM (6PCS / BOX)
(24PCS / CTN)

H446A-PT

1000GMS (6PCS/BOX)
(24PCS/CTN)

H447A-PT

1500GMS (4PCS/BOX)
(12PCS/CTN)

H448A-PT

2000GMS (4PCS/BOX)
(12PCS/CTN)



BLACK MATT FINISH MECHANIST HAMMER WITH WOODEN HANDLE

- Special power coated head polished with curved edges for extra protection during tough industrial application.
- 1st grade wooden handle with an extra metal clip protector under head, to provide tough grip for durable usage

H494A-PT

300GMS / 6PC/BOX
48PC/CTN

H441A-PT

500GMS / 6PCS/BOX
36PCS/CTN

H495A-PT

800GMS / 6PC/BOX
24PC/CTN

H442A-PT

1000GMS / 6PCS/BOX
24PCS/CTN

H443A-PT

1500GMS / 4PCS/BOX
12PCS/CTN

H444A-PT

2000GMS / 4PCS/BOX
12PCS/CTN

The Brand Says It All.



**SHINNY CHROME FINISH STRAIGHT CLAW
HAMMER WITH WOODEN HANDLE**

- High rated glue applied at the top of the head for a gurantee grip between the head and handle.
- 1st grade wooden handle used to provide tough grip and durability for usage.

H489A-PT

16oz (6PC/BOX) (36PC/CTN)



**SHINNY CHROME FINISH STRAIGHT CLAW
HAMMER WITH FIBRE/ TPR GRIP HANDLE**

- High rated glue applied at the top of the head for a gurantee grip between the head and handle.
- Superior imported fibre applied in the handle to avoid any breakage between head and handle.

H436B-PT

16OZ / 6PCS/BOX
36PCS/CTN

The Brand Says It All.



**SHINNY CHROME FINISH BENT CLAW HAMMER
WITH FIBRE/ TPR GRIP HANDLE**

- High rated glue applied at the top of the head for a gurantee grip between the head and handle.
- Superior imported fibre applied in the handle to avoid any breakage between head and handle.

H496A-PT

8 OZ (6PCS/BOX)
48PCS/CTN

H436A-PT

16OZ (6PCS/BOX)
36PCS/CTN



**SHINNY CHROME FINISH BALL-PEIN HAMMER
WITH FIBRE/ TPR GRIP HANDLE**

- High rated glue applied at the top of the head for a gurantee grip between the head and handle.
- Specific designed round / flat surface on both sides to provide high intensive usage during construction.

H471A-PT

16OZ / 6PCS/BOX / 36PC/CTN

H472A-PT

24OZ / 6PCS/BOX / 24PC/CTN

H473A-PT

32OZ / 6PCS/BOX / 24PC/CTN

The Brand Says It All.



**BLACK MATT FINISH BENT CLAW HAMMER
WITH FIBRE/ TPR GRIP HANDLE**

- High rated glue applied at the top of the head for a gurantee grip between the head and handle.
- Superior imported fibre applied in the handle to avoid any breakage between head and handle.

H547A-PT

16OZ (6PCS/BOX)
36PCS/CTN

The Brand Says It All.



PLUMB BOB ROUND TYPE (GREEN)

PUB14B-PT

460gm (2DZ/CT)



INDUSTRIAL POINTED PLUMBOB 14OUNC

- Unique plumbob features a quick stabilizing cap that reduces bob wobble and spin
- Braided nylon line extends and holds at lengths upto 14 ft
- Chrome Plated to resist rust and corrosion

PUB15C-PT

(2DZ /CTN)

The Brand Says It All.



CHALKINE REEL SET

- Kit Contains 30mtr Chalk line, 3oz chalk capacity
- High Impact ABS case for durability
- Sliding door for quick and easy refill
- Can be used vertically as a plum bob

CL24B-PT

RED COLOR 3PC SET (12 SET/BOX/48SETS / CTN)

CL23B-PT

BLUE COLOR 3PC SET (12 SET/BOX/48SETS / CTN)



CHALK LINE POWDER

- Kit Contains 30mtr Chalk line, 3oz chalk capacity
- High Impact ABS case for durability
- Sliding door for quick and easy refill

CL27A-PT

CHALK LINE POWDER ONLY RED
48PCS / CTN.

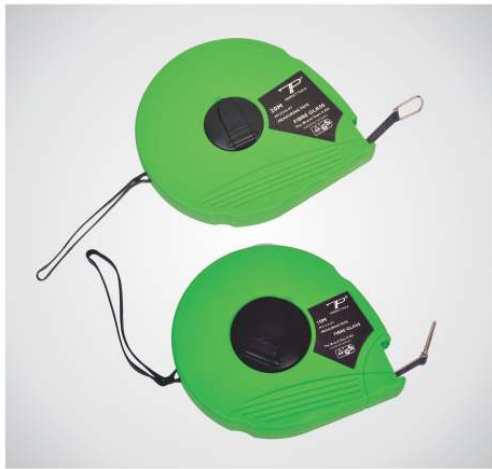
CL28A-PT

CHALK LINE POWDER ONLY BLUE
48PCS / CTN.

The Brand Says It All.



TAPES, LEVEL & BRACKETS



FIBRE MEASURE TAPE GREEN

MT221A-PT

10 MTR (60PCS/CTN)

MT222A-PT

15 MTR (60PCS/CTN)

MT223A-PT

20 MTR (30PCS/CTN)

MT224A-PT

30 MTR (30PCS/CTN)

MT225A-PT

50 MTR (30PCS/CTN)



DOUBLE-SIDE, TWO-SIDED LOCK PREMIUM STEEL MEASURE TAPE WITH GRIP

- Two-side locking system with a double-sided blade provides maximum efficiency and accuracy for various multi-purpose applications.
- Sturdy grip provided for aggressive use in rough areas.
- ABS airlock ensures locking and unlocking becomes easier.

MT199A-PT

3Mx16MM (120PC/CTN)

MT200A-PT

5Mx19MM (120PC/CTN)

MT201A-PT

5Mx25MM (120PC/CTN)

MT202A-PT

7.5Mx25MM (60PC/CTN)

MT203A-PT

10Mx25MM (60PC/CTN)

The Brand Says It All.



ELECTRO-PLATING PREMIUM MEASURE TAPE WITH GRIP

- Sturdy grip provided for aggressive use in rough areas.
- Electro-plating provided for extra visibility and anti-rust of the body .
- ABS airlock ensres locking and unlocking becomes easier.

MT204A-PT

3Mx16MM (120PC/CTN)

MT205A-PT

5Mx19MM (120PC/CTN)

MT206A-PT

7.5Mx25MM (60PC/CTN)



SINGLE-SIDE, TWO-SIDED LOCK BASIC STEEL MEASURE TAPE WITH GRIP

- Two-side locking system allows quick use for locking and unlocking during DIY usage.
- Rough grip provided to ensure a long-lasting grip.

MT194A-PT

3MX16MM (120PCS/CTN)

MT195A-PT

3MX19MM (120PCS/CTN)

MT196A-PT

5MX19MM (120PCS/CTN)

MT197A-PT

7.5MX25MM (60PCS/CTN)

MT198A-PT

10MX25MM (60PCS/CTN)

The Brand Says It All.



DOUBLE-SIDED BASIC STEEL MEASURE TAPE WITH GRIP

- Matt surface finished blade on both sides for multi-purpose application and protection against rust/corrosion.
- Smooth grip provided for smooth DIY usage.

MT189A-PT

3MX16MM (72PCS/CTN)

MT190A-PT

5MX19MM (72PCS/CTN)

MT191A-PT

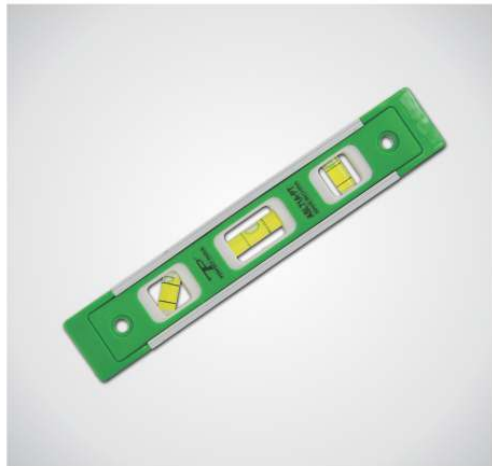
5MX25MM (72PCS/CTN)

MT192A-PT

7.5MX25MM (48PCS/CTN)

MT193A-PT

10MX25MM (48PCS/CTN)



DIY COMPACT SPIRIT LEVEL WITH MAGNET

- Strong magnet used to grip onto walls quickly.
- 3 vial mini level provided for easy storage in pocket and daily usage.
- Ideal for small jobs.

ASL71A-PT

225MM (200PC/CTN)

The Brand Says It All.



3 VIAL HEAVY DUTY SPIRIT LEVEL WITH GRIP

- Professional and accurate vials placed for defined readings.
- Industrial level made out of ABS plastic body to avoid breakage against minor accidents.
- Strong sturdy grip provided for a durable hold.

ASL88A-PT

300MM (50PC/CTN)

ASL89A-PT

400MM (50PC/CTN)

ASL72A-PT

600MM (30PC/CTN)

ASL73A-PT

800MM (20PC/CTN)

ASL74A-PT

1000MM (20PC/CTN)

ASL75A-PT

1200MM (20PC/CTN)



ALUMINUM TRY SQUARE ADVANCED

- Extra vial with pencil provided for an added advantage.

TS19A-PT

10" (25CM) 60PCS/CTN

TS20A-PT

12" (30CM) 60PCS/CTN

TS21A-PT

14" (35CM) 60PCS/CTN

The Brand Says It All.



UTILITY SHELF BRACKET

- Unique White Powder coated finish for an attractive look in interior usage and prevention against rust/corrosion.
- Utility shelf brackets provide an economical way to support shelves.
- Ideal for garages, shops and utility rooms.
- Heavy long middle layer provided for extra support and durability.

SBR30A-PT

4" X 5" / 20PC/CTN

SBR31A-PT

5" X 6" / 20PC/CTN

SBR32A-PT

6" X 8" / 20PC/CTN

SBR33A-PT

8" X 10" / 20PC/CTN

SBR34A-PT

10" X 12" / 20PC/CTN

SBR35A-PT

12" X 14" / 20PC/CTN



INDUSTRIAL L-TYPE SHELF BRACKET

- Unique White Powder coated finish for an attractive look in interior/exterior usage and prevention against rust/corrosion.
- Designed for extra-heavy loads.
- Ideal for commercial, industrial, and residential uses such as supporting counter-tops, work surfaces and shelving.
- Great for areas receiving frequent use and rough handling.

SBR36A-PT

12" X 8" / 10PC/CTN

SBR37A-PT

16" X 11" / 10PC/CTN

SBR38A-PT

20" X 13" / 10PC/CTN

The Brand Says It All.



PIPE WRENCHES



HIGH-TENSILE PIPE WRENCH WITH 2 EYEBROW, WITHOUT GRIP

- Heavy duty ductile cast iron handle and alloy steel parts are designed to withstand the heaviest demands.
- Heat-treated hook and sharp jaws included for sturdy long-lasting grip in industrial application.

PW95A-PT

8" (54PCS/CTN)

PW96A-PT

10" (24PCS/CTN)

PW97A-PT

12" (24PCS/CTN)

PW98A-PT

14" (18PCS/CTN)

PW99A-PT

18" (12PCS/CTN)

PW100A-PT

24" (6PCS/CTN)

PW101A-PT

36" (4PCS/CTN)

PW102A-PT

48" (3PCS/CTN)



HIGH-TENSILE PIPE WRENCH WITH 2 EYEBROW, WITHOUT GRIP

- Heavy duty ductile cast iron handle and alloy steel parts are designed to withstand the heaviest demands.
- Heat-treated hook and sharp jaws included for sturdy long-lasting grip in industrial application.

PW95B-PT

8" (54PCS/CTN)

PW96B-PT

10" (24PCS/CTN)

PW97B-PT

12" (24PCS/CTN)

PW98B-PT

14" (18PCS/CTN)

PW99B-PT

18" (12PCS/CTN)

PW100B-PT

24" (6PCS/CTN)

PW101B-PT

36" (4PCS/CTN)

PW102B-PT

48" (3PCS/CTN)

The Brand Says It All.



MEDIUM-DUTY PIPE WRENCH, WITHOUT GRIP

- Cast iron handle designed for easy handling and quick use for medium sizes applications.
- Flat surfaced jaw is ideal for occasional use as a hammer.

PW103A-PT

8" (72PCS/CTN)

PW104A-PT

10" (48PCS/CTN)

PW105A-PT

12" (36PCS/CTN)

PW106A-PT

14" (24PCS/CTN)

PW107A-PT

18" (16PCS/CTN)

PW108A-PT

24" (12PCS/CTN)



TITANIUM-ALUMINUM PIPE WRENCH WITH 2 EYEBROW, WITHOUT GRIP

- Light and strong alloy handle is heat-treated for maximum strength and easier usage with heat-treated sharp jaws.
- It is extremely durable for industrial applications as well.

PW77A-PT

10" (36PCS/CTN)

PW78A-PT

12" (24PCS/CTN)

PW79A-PT

14" (24PCS/CTN)

PW80A-PT

18" (12PCS/CTN)

PW81A-PT

24" (8PCS/CTN)

PW82A-PT

36" (4PCS/CTN)

The Brand Says It All.



90 DEGREE CRV ADJUSTABLE PIPE WRENCH

- Induction hardened jaws and rapid adjust nut allows easy and super fast adjustable jaws for gripping high-density materials
- the 90 degree application gives good grip even at the widest opening.

PW90A-PT

3/4" (36PCS/CTN)

PW91A-PT

1" (36PCS/CTN)

PW92A-PT

1.5" (24PCS/CTN)

PW93A-PT

2" (12PCS/CTN)

PW94A-PT

3" (6PCS/CTN)



PIPE WRENCH SWEDEN TYPE

PW117A-PT

10" (36PCS / CTN)

PW118A-PT

12" (24PCS / CTN)

PW119A-PT

14" (18PCS / CTN)

PW120A-PT

18" (12PCS / CTN)

PW121A-PT

24" (12PCS / CTN)

The Brand Says It All.



CHAIN PIPE WRENCH

PW123A-PT

4" - 4PC / CT

PW124A-PT

6" - 4PC / CT

PW125A-PT

8" - 4PC / CT

PW126A-PT

10" - 2PC / CT

PW127A-PT

12" - 2PC / CT

The Brand Says It All.



BOLT CUTTERS, CABLE CUTTERS WIRE CUTTERS & PIPE CUTTERS



HEAVY DUTY NATURAL FINISH BOLT CUTTER WITH RUBBER GRIP

- Hardened alloy crv steel jaws for industrial usage.
- Flexible spring in handle provided - exclusive Japanese technology.

BTC55A-PT

14" (20PCS/CTN)

BTC56A-PT

18" (10PCS/CTN)

BTC57A-PT

24" (10PCS/CTN)

BTC58A-PT

30" (5PCS/CTN)

BTC59A-PT

36" (5PCS/CTN)

BTC60A-PT

42" (3PCS/CTN)



HEAVY DUTY CABLE CUTTER WITH RUBBER GRIP - JAPANESE MODEL

- Precision-machined, forged crv hardened steel blades.

BTC61A-PT

18" (10PCS/CTN)

BTC62A-PT

24" (10PCS/CTN)

BTC63A-PT

32" (5PCS/CTN)

BTC64A-PT

36" (5PCS/CTN)



LIGHT DUTY CABLE CUTTER WITH RUBBER GRIP

- Carbon steel, curved cutting blades.

P302A-PT

6" (60PC/CTN)

P297A-PT

8" (60PC/CTN)

P298A-PT

10" (60PC/CTN)



HIGH-LEVERAGE WIRE CUTTER WITH GRIP -

- Heat-treated, precision ground, shear action blades custom designed to provide more effective and define cutting during industrial applications.
- Strong steel handles with molded grips and an extra flexible spring element used for good leverage.

BTC89A-PT

24" (10PCS/CTN)

BTC90A-PT

36" (5PCS/CTN)

BTC91A-PT

42" (4PCS/CTN)

The Brand Says It All.



AUTOMATED PIPE CUTTER

- Unique corrosion-resistant, satin finished pointed steel blade helps the cut in tough plastics such as CPVC, and helps avoid bounce in thin wall.
- Industrial blade designed to cut PE, PVC and CPVC pipes used in gas, water, plumbing and other industrial applications.
- Blades can be easily sharpened or replaced, enhancing performance and saving money.
- Special-loaded automated handle to provide quick release of blade and instant adjustment to any pipe size.

PC09A-PT

42mm / 24PCS/CTN



PLIERS



CRV STEEL COMBINATION PLIER WITH EXTRA ANTI-RUST SATIN FINISH

- Smooth layered rubber grip specially designed for industrial/ DIY usage

P281B-PT

6" (60PCS/CTN)

P282B-PT

7" (60PCS/CTN)

P283B-PT

8" (60PCS/CTN)



CRV STEEL DIAGONAL PLIER WITH EXTRA ANTI-RUST SATIN FINISH

- Smooth layered rubber grip, specially designed for industrial/ DIY usage

P284B-PT

6" (60PCS/CTN)

P285B-PT

7.5" (60PCS/CTN)

The Brand Says It All.



CRV STEEL LONG-NOSE PLIER WITH EXTRA ANTI-RUST SATIN FINISH

- Smooth layered rubber grip, specially designed for industrial/ DIY usage

P286B-PT

6" (60PCS/CTN)

P287B-PT

8" (60PCS/CTN)



CIRCLIP PLIER STRAIGHT INTERNAL (6) CIRCLIP PLIER BENT INTERNAL (6) CIRCLIP PLIER STRAIGHT EXTERNAL (6) CIRCLIP PLIER BENT EXTERNAL (6)

P289A-PT

7" (60PC/CTN)

P289B-PT

7" (60PC/CTN)

P289C-PT

7" (60PC/CTN)

P289D-PT

7" (60PC/CTN)



**CRV STEEL INTERNAL / EXTERNAL CIRCLIP PLIER WITH
EXTRA ANTI-RUST SATIN FINISH**

- For bending wire loops
- Round, short jaws; finely ground
- Chrome vanadium electric steel, forged, oil-hardened

P424A-PT

STRAIGHT INTERNAL
255MM (60PCS/CTN)

P425A-PT

BENT INTERNAL
255MM (60PCS/CTN)

P426A-PT

STRAIGHT EXTERNAL
255MM (60PCS/CTN)

P427A-PT

BENT EXTERNAL
255MM (60PCS/CTN)



**CARBON STEEL 4PC CIRCLIP PLIERS WITH
DIPPED GRIP**

- Unique spring steel provided in handle for rapid DIY application

P291A-PT

7" (20SETS/CTN)

The Brand Says It All.



3 NAIL CRV CURVED BLADE VISE-GRIP WITH RUBBER GRIP

- Automatic spring steel technology provided in handle for quick grip and release.
- Brass nut provided for fine-tuning.

P219A-PT

10" (30PCS/CTN)



3 NAIL CRV STRAIGHT BLADE VISE-GRIP WITH BLACK SATIN FINISH BODY

- Automatic spring steel technology provided in handle for quick grip and release.
- Brass nut provided for fine-tuning.

P288A-PT

10" (30PCS/CTN)



ANTI-RUST OIL PROTECTED END CUTTING PLIER, WITH DIPPED GRIP -

- Special CRV blade with extra heat treatment provided for Industrial usage

P292A-PT

160MM/6" (60PC/CTN)

P293A-PT

180MM/7" (48PC/CTN)



ANTI-RUST OIL PROTECTED CARPENTER PINCER PLIER, WITH DIPPED GRIP

- Special CRV blade with extra heat treatment provided for industrial/ diy usage

P301A-PT

8" (60PC/CTN)

The Brand Says It All.



ANTI-RUST OIL PROTECTED TOWER PINCER PLIER, WITH DIPPED GRIP

- Special CRV blade with extra heat treatment provided for industrial/ DIY usage.

P299A-PT

9" (60PC/CTN)

P300A-PT

10" (60PCS/CTN)



TIN SNIP WITH SATIN FINISHED CRV BLADES AND FINGER DESIGNED RUBBER GRIP

- Machined teeth specific shaped in blade to provide an hard-wearing cut.
- Switch-lock provided in handle for easy release.

P367A-PT

Straight - 10" (60PCS/CTN)

P368A-PT

Left - 10" (60PCS/CTN)

P369A-PT

Right - 10" (60PCS/CTN)



TIN SNIP WITH SATIN FINISHED CARBON STEEL BLADES

- Spring steel provided between the handle for quick use in application.

P365A-PT

8" (54PCS/CTN)

P366A-PT

10" (54PCS/CTN)

P358A-PT

12" (36PCS/CTN)

P359A-PT

14" (24PCS/CTN)



REVOLVING PUNCH PLIER WITH INSULATED GRIP

P290A-PT

10" (60PC/CTN)

The Brand Says It All.



INSULATED GROOVE JOINT- WATER PUMP PLIER

- Heat treated chrome vanadium steel forged water pump pliers
- Seven position slip joint adjustable head
- bi-material handles and polished heads produce a better grip for comfort and a precision appearance

P280-PT

10" (60PC/CTN)



INSULATED TILE NIPPER

- Premium quality 8" carbide-tipped "PT" tile nipper.
- Rugged drop forged steel, ground and polished 5/8" offset jaws for accurate cutting.
- For use with all types of tiles, including porcelain.
- Cushioned Insulated grip, comfortable contoured handles are curved for high leverage.

P428A-PT

8" (60PC / CTN)



AXE / PICKAXES



DROP FORGED S-TYPE AXE WITH TPR-FIBRE HANDLE - JAPAN MODEL

- Axe features a heat treated, drop forged head, lightweight fibreglass shaft and an ergonomic rubber handle, making it perfect for various chopping applications.
- It's comfortable to use and very capable, ideal for chopping trees, wood and branches with ease.

PX48A-PT

500G / 6PC/BOX
36PC/CTN

PX49A-PT

800G / 6PC/BOX
24PC/CTN

PX50A-PT

1000G / 6PC/BOX
24PC/CTN

PX51A-PT

1500G / 12PC/CTN



2 IN1 HEAVY-DUTY DROP FORGED S-TYPE AXE WITH WOODEN HANDLE

- Axe features a heat treated, drop forged bottom blade with a sharp additional crv silver blade for usage in study and durable cutting of large trees and branches.
- First-grade varnished wooden handle fixed with high-intensity glue to avoid breakage between handle and head during long-hour usage on heavy applications.

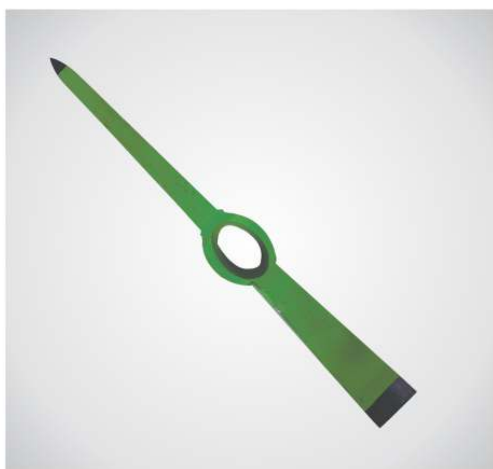
PX52A-PT

1000G . 6PC/BOX
24PC/CTN

PX53A-PT

2000G / 12PC/CTN

The Brand Says It All.



DOUBLE-SIDED OVAL PICKAXE WITH WOODEN HANDLE

- Flat side ideal for breaking roots and the chisel point can be used to break the hard ground.
- The head is powder coated to avoid rust and friction, assuring smooth and quick usage.
- The product is very sturdy and has a smooth texture on the handle for a comfortable grip.

PX54A-PT

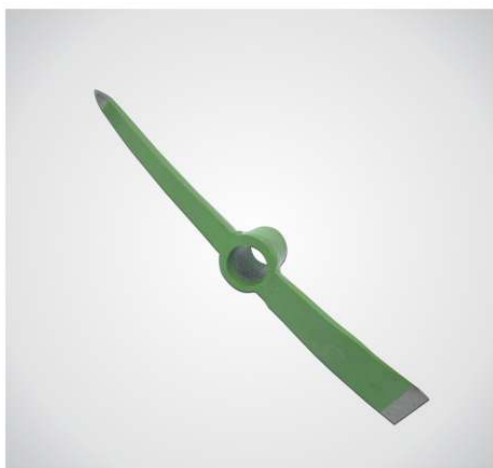
4.5LB / 6PC/CTN

PX55A-PT

5LB / 6PC/CTN

PX56A-PT

6LB / 6PC/CTN



DOUBLE-SIDED ROUND PICKAXE WITH WOODEN HANDLE

- Flat side ideal for breaking roots and the chisel point can be used to break the hard ground.
- The head is powder coated to avoid rust and friction, assuring smooth and quick usage.
- The product is very sturdy and has a smooth texture on the handle for a comfortable grip.

PX57A-PT

2KG / 6PC/CTN

PX58A-PT

2.5KG / 6PC/CTN

PAINT BRUSHES & ROLLERS



100% SUPERIOR QUALITY NATURAL WHITE BRISTLE PAINT BRUSH WITH WOODEN HANDLE

- Extra thick and long bristles with high loading capacity, making it very good for fine brush work and maximum paint pickup.
- Carefully structured rust-resistant stainless steel ferrule provided to enhance durability while continuous usage.
- Suitable for use with water and oil-based paints.
- Additional polished varnished imported wooden handle to protect against rust.

PB97A-PT

1/2"X11MMX44MM (50DOZ/CTN)

PB99A-PT

1"X13MMX52MM (50DOZ/CTN)

PB101A-PT

2"X14MMX64MM (30DOZ/CTN)

PB103A-PT

3"X19MMX76MM (20DOZ/CTN)

PB105A-PT

5"X21MMX84MM (10DOZ/CTN)

PB98A-PT

3/4"X12MMX44MM (50DOZ/CTN)

PB100A-PT

1.5"X13MMX57MM (50DOZ/CTN)

PB102A-PT

2.5"X16MMX70MM (30DOZ/CTN)

PB104A-PT

4"X21MMX84MM (16DOZ/CTN)

PB106A-PT

6"X21MMX84MM (10DOZ/CTN)



100% PREMIUM QUALITY NATURAL BLACK BRISTLE PAINT BRUSH WITH TPR GRIP

- Extra thick and long bristles with high loading capacity, making it very good for fine brush work and maximum paint pickup.
- Carefully structured rust-resistant stainless steel ferrule provided to enhance durability while continuous usage.
- Suitable for use with water and oil-based paints.

PB107A-PT

1"X14MMX44MM (50DOZ/CTN)

PB109A-PT

2"X17MMX50MM (30DOZ/CTN)

PB111A-PT

3"X20MMX56MM (20DOZ/CTN)

PB108A-PT

1.5"X14MMX44MM (50DOZ/CTN)

PB110A-P

2.5"X19MMX50MM (30DOZ/CTN)

PB112A-PT

4"X20MMX56MM (10DOZ/CTN)

The Brand Says It All.



HIGH DENSITY WOVEN WHITE PAINT ROLLER WITH TPR GRIP

- Roller made of pure nylon material, which enables the paint to flow freely into and out of the cover for easy rolling and a high quality finish.
- Suitable for all latex, oil-based paints and stains, used mainly for external surfaces with smooth/ semi-rough surfaces.

PR44A-PT

9" 36PC/CTN



ACRYLIC FIBER PAINT ROLLER WITH ABS HANDLE

- High density acrylic fiber imported for carrying large quantity of paint, leading to improved efficiency and productivity.
- Specially designed for interior walls as the fabric is capable of carrying a remarkable amount of material to the surface without dripping or splattering.
- Suitable for all water-based and oil-based paints on any surface texture.

PR46A-PT

10" (25PCS/CTN)

The Brand Says It All.



100% PURE SHEEPSKIN WOOL PAINT ROLLER WITH ABS HANDLE

- Suitable for oil and water-base coatings, wool roller covers are best with oil-base products.
- Wool roller covers pick-up, hold and release a great deal of paint or stain.

PR47A-PT

4" (120PCS/CTN)

PR48A-PT

7" (120PCS/CTN)

PR49A-PT

9" (60PCS/CTN)



CONTRACTOR'S WIDE-STRIPS COLOR PAINT ROLLER WITH ABS HANDLE

- Roller covers are made of 100% medium-density material for good production and quick cleanup.
- Perfect for rolling a great deal of new drywall quickly for external surfaces.

PR53A-PT

9" (60PCS/CTN)



GREEN COLOR PAINT ROLLER

PR96A-PT

4" - 60PCS / CTN

PR97A-PT

7" - 60PCS / CTN

PR98A-PT

9" - 60PCS / CTN.



ABS EXTENDED PAINT ROLLER HANDLE

- Long handled frame for painting behind radiators or hard to reach areas.
- Long handle length 18", 4" Roller
- Handle use to fit 4" refills PR43A/ PR63A/ PR73A

PR81A-PT

4" (120PCS/CTN)

The Brand Says It All.



HIGH DENSITY WOVEN WHITE PAINT ROLLER REFILL

- Pure nylon material, used for oil-based paint for external smooth/ semi-rough surfaces.

PRP13A-PT

9" 120PCS/CTN



ACRYLIC FIBER PAINT ROLLER REFILL

- Acrylic fibre material, used for water-based and oil- based paints for internal / external use on any surface texture.

PRP14A-PT

10" (100PCS/CTN)



HIGH DENSITY WOVEN WHITE PAINT ROLLER REFILL

- Pure nylon material, used for oil-based paint for external smooth/ semi-rough surfaces.

PR73A-PT

4" (50BOX/CTN)



ACRYLIC FIBER PAINT ROLLER REFILL

- Acrylic fibre material, used for water-based and oil- based paints for internal / external use on any surface texture.

PR63A-PT

4" (50BOX/CTN)

The Brand Says It All.



ABS PLASTIC DEEP PAINT TRAY

- With a capacity for 5 litres of paint, the tray is designed for easy pouring and easy storage.
- Build extra deep and sturdy for usage on industrial and construction sites.

PR51A-PT

9" (50PCS/CTN)



TUNGSTEN CARBIDE WINDOW SCRAPER

- The Blade made of A grade Tungsten Carbide for 2 times more durability over other traditional steel blades
- The Soft Base handle is ergonomically designed to be more comfortable

S89A-PT

4" (100PC / CTN)



SPONGE WHITE ROLLER REFILL

- Disposable sponge refills designed for quick use and throw for internal/ external interiors.
- Special fibre used to hold paint strong oil-based paints.

PR43A-PT

4" (20BOX/CTN)

The Brand Says It All.

PERFECT TO

WIRE BRUSHES



WHEEL / CIRCULAR BRUSH BRASS COLOR

WB77A-PT

125mm (100PC/CTN)

WB78A-PT

150mm (40PC/CTN)

WB79A-PT

200mm (20PC/CTN)



CUP WIRE BRUSH TWISTED

WB73A-PT

65x10mm (10PC/CTN)

WB74A-PT

75x10mm (10PC/CTN)

WB74B-PT

75x14mm (100PC/CTN)

WB92A-PT

100x14mm (50PC/CTN)

WB93B-PT

125x14mm (30PC/CTN)

WB94A-PT

150x14mm (18PC/CTN)



CUP WIRE BRUSH TWISTED WITH RING

WB71A-PT

65x10mm (80PC/CT)

WB72C-PT

75x10mm (100PC/CT)

WB72D-PT

75x14mm (100PC/CT)

WB89A-PT

100x14mm (40PC/CT)

WB90A-PT

125x14mm (20PC/CT)

WB91A-PT

150x14mm (18PC/CT)



WHEEL / CIRCULAR BRUSH TWISTED WITH NUT

WB80B-PT

100 X M14 (100PC/CT)

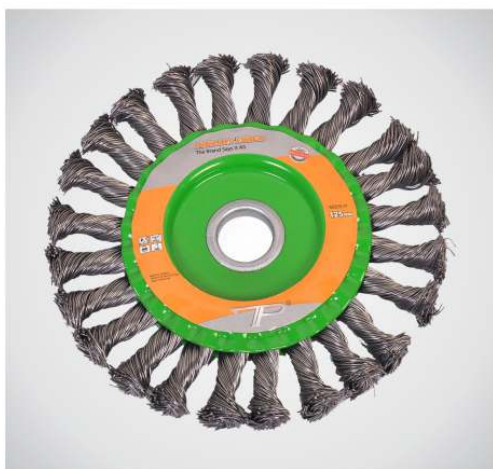
WB81B-PT

125 x M14 (50PC / CT)

WB82A-PT

150 X M14 (40 PC/CT)

The Brand Says It All.



WHEEL / CIRCULAR BRUSH TWISTED WITH NUT

WB83B-PT

125MM (50PCS/CTN)

WB84A-PT

150MM (40PCS/CTN)

WB85B-PT

200MM (20PCS/CTN)



CUP WIRE BRUSH BRASS COLOR

WB75A-PT

65X10MM (100PCS / CTN)

WB76A-PT

75X10MM (100PCS / CTN)

WB76B-PT

75X14MM (100PCS / CTN)

WB95B-PT

100X14MM (60PCS / CTN)

WB96A-PT

125X14MM (30PCS / CTN)

WB97A-PT

150X14MM (30PCS / CTN)



DIY BRUSH SET

WB86A-PT

3PCS=1 SET - 80SET/ CTN.

WB87A-PT

5PCS=1 SET - 40SET/ CTN.



SCRATCH BRUSH

WB88A-PT

140 x 260 - 200PCS / CTN

The Brand Says It All.



INDUSTRIAL HAND-MADE WIRE BRUSHES

- Made with fine fill material, recommended for use on plated parts and for fine metal finishing
- Solid hardwood shoe handle, contoured for a comfortable grip, filled with durable metal for cleaning abrasion-resistant materials.
- Brass / Galvanized colors carbon sprayed for various applications.

WB99A-PT

BLACK BRISTELS 4*16 ROW / 10DZ /CTN

WB100A-PT

BRASS BRISTELS 4*16 ROW/ 10DZ/CTN



HEAVY DUTY BROOM BRUSH

- This heavy duty broom has long thick filaments which makes it ideal for sweeping heavy particles.
- This brush is also suitable for use in wet and external areas.
- The soft bristles limit the release of dust particles

BS30A-PT

10"(1DZ/CTN)

BS31A-PT

Broom Stick (50Pcs)



HEAVY DUTY FLICKERING MACHINE

- Very light Weight (1.6 kg)
- Easy to handle & hand Operated
- No Need of skilled mason
- Grained (Textured) Plaster on walls of building
- Can be applied outside wall of building
- No need of Painting & white Wash
- 2mm to 6mm Grains can be exposed on wall
- Can be done on plain or bricked surface
- No need for putty and leveling

FM19A-PT

0.45MM (12PC / CTN)



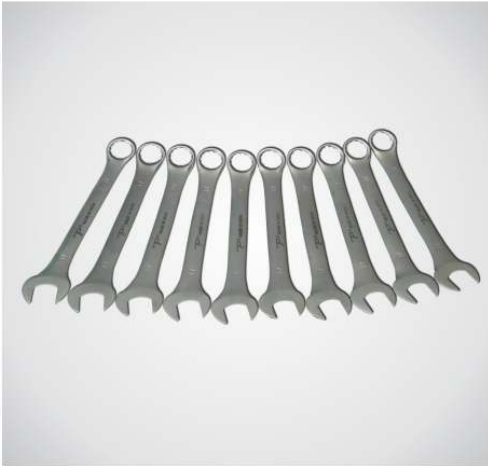
TOOL BOX WITH SINGLE HANDLE 5 KG

TBX34A-PT

21" - 4PCS / CTN.

The Brand Says It All.

SPANNERS



SUPREME SINGLE PC HEAVY DUTY COMBINATION SPANNERS

- Drop Forged from Chrome Vanadium steel.
- Fully hardened and tempered to sustain higher "Torques"
- Nickel – Plated for enhanced life and appearance.

SPN189D-PT **SPN230A-PT** **SPN231A-PT**
24MM (60PC/CTN) 25MM (60PC/CTN) 26MM (60PC/CTN)

SPN175B-PT **SPN232A-PT** **SPN233A-PT**
27MM (50PC/CTN) 28MM (50PC/CTN) 29MM (50PC/CTN)

SPN176B-PT **SPN177B-PT** **SPN236A-PT**
30MM (50PC/CTN) 32MM (60PC/CTN) 33MM (30PC/CTN)

SPN237A-PT **SPN238A-PT** **SPN239A-PT**
34MM (20PC/CTN) 35MM (20PC/CTN) 36MM (20PC/CTN)

SPN240A-PT **SPN241A-PT** **SPN242A-PT**
37MM (20PC/CTN) 38MM (20PC/CTN) 39MM (20PC/CTN)

SPN243A-PT **SPN244A-PT** **SPN245A-PT**
40MM (20PC/CTN) 41MM (20PC/CTN) 42MM (20PC/CTN)

SPN246A-PT **SPN247A-PT** **SPN248A-PT**
43MM (20PC/CTN) 44MM (20PC/CTN) 45MM (20PC/CTN)

SPN249A-PT **SPN250A-PT** **SPN251A-PT**
46MM (20PC/CTN) 47MM (10PC/CTN) 48MM (10PC/CTN)

SPN252A-PT
50MM (12PC/CTN)

SPN227A-PT **SPN228A-PT** **SPN162B-PT**
6MM (250PC/CTN) 7MM (250PC/CTN) 8MM (250PC/CTN)

SPN163B-PT **SPN164B-PT** **SPN165B-PT**
9MM (250PC/CTN) 10MM (250PC/CTN) 11MM (250PC/CTN)

SPN166B-PT **SPN167B-PT** **SPN168B-PT**
12MM (250PC/CTN) 13MM (250PC/CTN) 14MM (250PC/CTN)

SPN169B-PT **SPN194C-PT** **SPN170B-PT**
15MM (250PC/CTN) 16MM (250PC/CTN) 17MM (200PC/CTN)

SPN171B-PT **SPN188C-PT** **SPN172B-PT**
18MM (200PC/CTN) 19MM (100PC/CTN) 20MM (100PC/CTN)

SPN173B-PT **SPN174B-PT** **SPN229A-PT**
21MM (100PC/CTN) 22MM (100PC/CTN) 23MM (100PC/CTN)

The Brand Says It All.



SUPREME SETS HEAVY DUTY RING SPANNERS

- Drop Forged from Chrome Vanadium steel.
- Fully hardened and tempered to sustain higher "Torques"
- Nickel – Plated for enhanced life and appearance.
- Finely machined Bi-Hexagonal serradons are geometrically perfect to reach faster for a uniform grip.

SPN254A-PT

8PCS (4 SETS / CTN.

SPN316A-PT

12PCS (10 SETS / CTN.



SUPREME SETS HEAVY DUTY COMINATION SPANNERS

- Drop Forged from Chrome Vanadium steel.
- Fully hardened and tempered to sustain higher "Torques"
- Nickel – Plated for enhanced life and appearance.

SPN255A-PT

8PC (8-19MM)/20 SETS /CTN

SPN179A-PT

12PC (6-22MM)/20 SETS /CTN

SPN203A-PT

14PC (10-32MM) / 10SETS / CTN

SPN218A-PT

25PC (6-32MM) / 4SETS / CTN

The Brand Says It All.



The Brand Says It All.



CRV OPEN-END RATCHETING WRENCHES

- Allows Ratcheting of Nuts and Bolts Without Removing Wrench From Fastener, Making Jobs Faster and Easier
- Ratcheting Speed with the Access of An Open End Wrench
- Pivoting head enables ratcheting function for fast operation
- Chrome vanadium steel forging for durability and high torque
- Full polish chrome plating for anti-corrosion protection and easy cleaning
- 15-degree box end offset for knuckle clearance

RW07A-PT

8MM" (100PC/CTN)

RW09A-PT

11MM" (100PC/CTN)

RW11A-PT

13MM" (100PC/CTN)

RW15A-PT

15MM" (100PC/CTN)

RW13A-PT

17MM" (100PC/CTN)

RW14A-PT

19MM" (50PC/CTN)

RW19A-PT

22MM" (50PC/CTN)

RW21A-PT

27MM" (36PC/CTN)

RW23A-PT

32MM" (16PC/CTN)

RW08A-PT

10MM" (100PC/CTN)

RW10A-PT

12MM" (100PC/CTN)

RW12A-PT

14MM" (100PC/CTN)

RW16A-PT

16MM" (100PC/CTN)

RW17A-PT

18MM" (50PC/CTN)

RW18A-PT

21MM" (50PC/CTN)

RW20A-PT

24MM" (50PC/CTN)

RW22A-PT

30MM" (24PC/CTN)

The Brand Says It All.



2PC MULTI-FUNCTION UNIVERSAL QUICK SNAP'N GRIP ADJUSTABLE WRENCH SPANNER SET

- Two universal wrenches that adapt to all kinds of bolts and nuts.
- With just one hand movement! Effective, practical, light weight system. Ideal plumbing, carpentry, mechanical and garden work.
- They are the solution to your problems with taps, valves, pipes and piping, radiators boilers, wheels, etc.
- The secret is their self-adjusting technology, which allows them to automatically adapt to the size.
- Material: CR-V Steel+ rubber +Plastic
- Wrench size:9-32mm

SPN235A-PT

9-32MM (36 SETS / CTN)



HIGH-GRADED CRV STEEL ADJUSTABLE WRENCH WITH GRIP

- Coated with satin plated finish on the head to reduce rust and corrosion for durability.
- Smooth operated adjustable knob provided in the handle to overcome any friction while quick opening and closure of jaws.
- Heavy tpr grip ensures a strong hold during sturdy operations.

AW71A-PT

6" 120PCS/CTN)

AW72A-PT

8" (60PCS/CTN)

AW73A-PT

10"(48PCS/CTN)

AW74A-PT

12" (36PCS/CTN)

AW93A-PT

15" (12PC/CTN)



TWO-WAY REVERSIBLE RATCHET SYSTEM

- Dual sized ratchet head with reversible lever action.
- Robust construction with easy to clean ratchet assembly.
- Taper end for ease of bolt hole alignment.

RW02A-PT

17-19MM / 40PC/CTN

RW03A-PT

19-21MM / 40PC/CTN

RW24A-PT

17-21MM / 40PC/CTN

RW06A-PT

21-23MM / 32PC/CTN



CLOSED RING REVERSIBLE CHROME FINISHED RATCHET WRENCH 5PC SET

- Five-degree ratcheting design for versatility and ease of use in tight spaces.
- Polished chrome finish for superior corrosion resistance.
- Hardened Precision heads for accurate fastener fit.

RW01A-PT

5PC/SET / 20SET/CTN

The Brand Says It All.



COMBINATION REVERSIBLE CHROME FINISHED RATCHET WRENCH 5PC SET

- Five-degree ratcheting design for versatility and ease of use in tight spaces.
- Polished chrome finish for superior corrosion resistance.
- Hardened precision heads for accurate fastener fit.

RW04A-PT

5PCS/SET / 4SETS/BOX
24SETS/CTN



COMBINATION REVERSIBLE CHROME FINISHED RATCHET WRENCH 7PC SET

- Five-degree ratcheting design for versatility and ease of use in tight spaces.
- Polished chrome finish for superior corrosion resistance.
- Hardened precision heads for accurate fastener fit.

RW05A-PT

7PCS/SET / 4SETS/BOX
16SETS/CTN



SCREW DRIVER



SCREW DRIVER SET CRV MATERIAL

SD179A-PT

6PCS (20SET/CTN)

SD180A-PT

7 PCS (20 SET/CTN)



SCREW DRIVER SET CRV MATERIAL (10)

SD181A-PT

5PCS (10 SET)

The Brand Says It All.



SCREW DRIVER 6mm (- / +) TWO COLOR HDL

SD182A-PT

4" (10 DOZ/CTN)

SD182B-PT

4" (10 DOZ/CTN)

SD223A-PT

6" (10 DOZ/CTN)

SD224A-PT

6" (10 DOZ/CTN)

SD212A-PT

8" (10 DOZ/CTN)

SD213A-PT

8" (10 DOZ/CTN)



SCREW DRIVER 6MM (- / +) HAMMERING HEAD

SD182C-PT

4" (10 DOZ/CTN)

SD182D-PT

4" (10 DOZ/CTN)

SD217A-PT

6" (10 DOZ/CTN)

SD218A-PT

6" (10 DOZ/CTN)

SD214A-PT

8" (10 DOZ/CTN)

SD215A-PT

8" (10 DOZ/CTN)

The Brand Says It All.



SCISSORS



PRUNING SHEAR WITH ADJUSTABLE KNOB AND TPR GRIP - JAPAN MODEL

- Heat treated crv blades with superior cutting edges, specially designed for heavy agricultural and forestry usage.
- Sturdy rubber grip developed for rough applications.

GS28A-PT

10" (12PC/CTN)



SCISSOR WITH DIPPED TPR GRIP - GERMAN MODEL

- Heat tempered curved carbon steel blade designed for DIY usage and tin cutting, providing flexibility.

SR10A-PT

8"/200MM (48PCS/CTN)

SR11A-PT

10"/250MM (36PCS/CTN)

SR12A-PT

12"/300MM (36PCS/CTN)

SR13A-PT

14"/350MM (24PCS/CTN)

The Brand Says It All.



METAL WOOL SHEAR - JAPAN MODEL

- Heat treated carbon steel blades used for straight cutting in medium duty usage.

SR14A-PT

12.5" (50PC/CTN)

The Brand Says It All.



GARDEN RAKES, FORKS & SICKLES



HEAVY-DUTY TEMPERED SINGLE-PIECE CURVED RAKE HEAD

- Curved tines efficiently gather and move soil during industrial application.
- Bow serves as spring for better of tine depth.

GR19B-PT

12T (12PC/CTN)

GR20B-PT

14T (12PC/CTN)



HEAVY-DUTY SINGLE-PC STEEL DIGGING FORK

- Tempered steel blades for greated strength in penetration of hard and rough surfaces.
- Made of out one-piece forged steel to ensure maximum strength during application and gurantee protection against any breakage or chipping.

GR23A-PT

1.7KG (12PC/CTN)

The Brand Says It All.



GARDEN RAKE GREEN COLOR 32 TEETH

GR29A-PT

24" - 24 PCS / CTN.



GARDEN RAKE PLAIN WITH STEEL HANDLE

GR38A-PT

14 TEETH - 12PCS / BDL

GARDEN RAKE TWISTED WITH STEEL HANDLE

GR39A-PT

14 TEETH - 12PCS / BDL

The Brand Says It All.



SHOVEL



FORGED ROUND POINTED BLACK SHOVEL WITH LONG HANDLE

- Extra-thick, 14-gauge tempered steel blade and double rivets provided for maximum power and greater strength.
- Closed-back design protects handle from mud and dirt build up.
- Special power coated black finish on blade used against rust.

SVL37A-PT

48"-2.1KG / 1.1KG HEAD / 6PC/BDL



DEEP ROUND METAL SHOVEL WITH D-HANDLE GRIP

- Extra deep heat treated head, extra heavy-duty 12 gauge blade closed type to process maximum power while usage and to avoid dirt buildup.
- A-grade steel used in handle for durability with grip to make it easier to find in the field.

SVL40A-PT

2.0KG 12PC/CTN

The Brand Says It All.



BASIC ROUND METAL SHOVEL WITH D-HANDLE GRIP

- Heat treated, extra heavy-duty 12 gauge blade closed type to process maximum power while usage and to avoid dirt buildup.
- A-grade steel used in handle for durability with grip to make it easier to find in the field.

SVL38B-PT

1.7KG / 12PC/CTN



DEEP SQUARE METAL SHOVEL WITH D-HANDLE GRIP

- Extra deep heat treated head, extra heavy-duty 12 gauge blade closed type to process maximum power while usage and to avoid dirt buildup.
- A-grade steel used in handle for durability with grip to make it easier to find in the field.

SVL38A-PT

1.7KG / 12PC/CTN

The Brand Says It All.



SHORT HANDLE WOODEN BASIC ROUND SHOVEL WITH GRIP - BRAZIL MODEL

- Medium 12-gauge tempered round steel blade allows basic penetration during light weighed applications.
- Wooden handle with d grip for comfort, grip helps control material being moved, easier to use in close quarters.

SVL36A-PT

900G / 12PC/BDL



CURVED GARDENER'S SICKLE

- High end grass sickle with steel blade, with light weight wooden handle for a good feel.
- Excellent for cutting back ferns or harvesting lavender and other herbs.
- Fine teeth for grasses and thin woody stems.

SK06A-PT

7" 120PC/CTN

The Brand Says It All.



TROVELS & SCRAPPERS



ROUND SHAPED PAN TROVEL WITH CARBON STEEL BLADE

- 1st grade wood used in handle for a long-lasting effect in visual and practice.

TR124A-PT

7" (72PCS/CTN)



SINGLE PIECE BRICKLAYER TROVEL FOR INDUSTRIAL APPLICATION - AUSTRIAN MODEL

- Complete trovel made from a single piece of steel, giving lifetime gurantee.
- Additional 1st grade wood material used in the handle for a heavy comfortable hold.

TR137A-PT

6" (72PCS/CTN)

TR138A-PT

7" (72PCS/CTN)

TR139A-PT

8" (72PCS/CTN)

The Brand Says It All.



SPRING STEEL MIRROR POLISHED BLADE BRICKLAYERING TROVEL - ITALIAN MODEL.

- 1st grade wood material provided with chrome cap for added protection in handle.

TR172A-PT

6" (60PCS/CTN)

TR173A-PT

7" (60PCS/CTN)

TR174A-PT

8" (60PCS/CTN)

TR175A-PT

9" (60PCS/CTN)



SPRING STEEL MIRROR POLISHED BLADE BRICKLAYERING TROVEL - ITALIAN MODEL.

- Soft rubber grip provided in handle for comfortable grip.

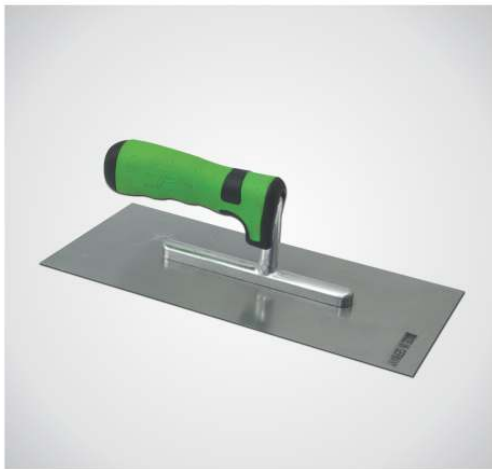
TR133A-PT

8" (60PCS/CTN)

TR134A-PT

9" (60PCS/CTN)

The Brand Says It All.

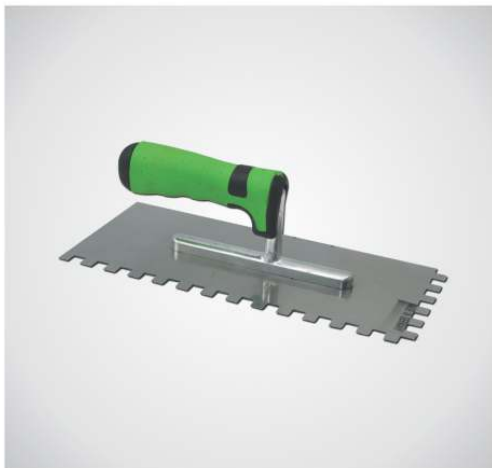


**PLAIN SHAPED SPRING STEEL MIRROR
POLISHED BLADE PLASTERING TROWEL**

- Spongy rubber grip provided in handle for relaxed grip.

TR164A-PT

280x130MM (60PCS/CTN.)



**1CM SHAPED SPRING STEEL MIRROR POLISHED
BLADE PLASTERING TROWEL**

- Spongy rubber grip provided in handle for relaxed grip.

TR165A-PT

1CM (60PCS/CTN.)

The Brand Says It All.



**SMALL-U SHAPED SPRING STEEL MIRROR
POLISHED BLADE PLASTERING TROVEL**

- Spongy rubber grip provided in handle for relaxed grip.

TR166A-PT

280x130MM (60PCS/CTN.)



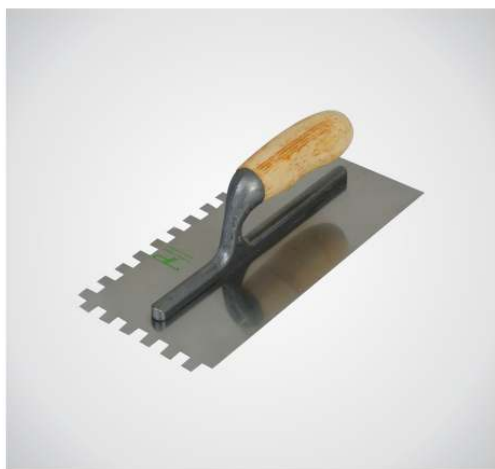
**ZIG-ZAG SHAPED SPRING STEEL MIRROR
POLISHED BLADE PLASTERING TROVEL**

- Spongy rubber grip provided in handle for relaxed grip.

TR167A-PT

280X130MM (60PCS/CTN)

The Brand Says It All.



**SMALL-U SHAPED SPRING STEEL MIRROR
POLISHED BLADE PLASTERING TROVEL**

- Strong 1st grade wood material with sturdy revit grip in blade for heavy application.

TR169A-PT

280X130MM (60PCS/CTN)



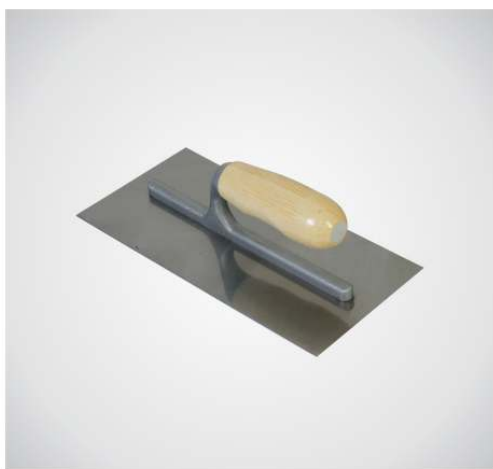
**SMALL-U SHAPED SPRING STEEL MIRROR
POLISHED BLADE PLASTERING TROVEL**

- Strong 1st grade wood material with sturdy revit grip in blade for heavy application.

TR170A-PT

280X130MM (60PCS/CTN)

The Brand Says It All.



**SQUARE SHAPED NATURAL STEEL FINISH BLADE
PLASTERING TROVEL**

- Strong 1st grade wood material with sturdy revit grip in blade for heavy application.

TR168A-PT

300X150MM (30PCS/CTN)



**ZIG-ZAG SHAPED SPRING STEEL MIRROR
POLISHED BLADE PLASTERING TROVEL**

- Strong 1st grade wood material with sturdy revit grip in blade for heavy application.

TR171A-PT

500X130MM (30PCS/CTN)

The Brand Says It All.



**SQUARE SHAPED NATURAL STEEL FINISH BLADE
PLASTERING TROWEL**

- Strong 1st grade wood material with sturdy rivet grip in blade for heavy application.

TR129A-PT

300X150MM (30PCS/CTN)



**RECTANGULAR SHAPED NATURAL STEEL FINISH
BLADE PLASTERING TROWEL**

- Strong 1st grade wood material with sturdy rivet grip in blade for heavy application.

TR136A-PT

500X130MM (30PCS/CTN)

The Brand Says It All.



**BLACK FINISH STEEL BLADE PLASTERING
TROVEL ITALIAN MODEL**

- First-rate tpr heavy rubber grip for comfortable grip.

TR135A-PT

280X140MM (60PCS/CTN)



**FLEXIBLE STAINLESS STEEL BLADE SCRAPER
WITH TPR GRIP**

- Advance mirror polish with anti-scratch provided for long-lasting usage.

S96B-PT

1"-50MM (20DOZ/CTN)

S73A-PT

2"-80MM (20DOZ/CTN)

S74A-PT

3"-85MM (20DOZ/CTN)

S75A-PT

4"- 00MM (20DOZ/CTN)

S76A-PT

5"-100MM (10DOZ/CTN)

S77A-PT

6"-100MM (10DOZ/CTN)

The Brand Says It All.



SPECIAL FLEXIBLE STEEL BLADE SCRAPER WITH TPR GRIP

- Advance mirror polish with anti-scratch provided for long-lasting usage.
- Abs material & an extra thumb hole provided on the grip to avoid any damage while usage.

S78A-PT

2" -80MM (20DOZ/CTN)

S79A-PT

3" -85MM (20DOZ/CTN)

S80A-PT

4" -100MM (20DOZ/CTN)

S81A-PT

5" -100MM (10DOZ/CTN)

S82A-PT

6" -100MM(10DOZ/CTN)



9 IN 1 RIGID BLADE SCRAPER WITH TPR GRIP

- Custom - designed heavy blade.
- Useful for 9 various heavy duty applications.

S88A-PT

3" -100MM(20COZ/CTN)

The Brand Says It All.



**WALL SCRAPER WITH
STAINLESS STEEL BLADE WOOD**

S111A-PT

10"x4.5" (10DZN/CTN)

The Brand Says It All.



HAND TRUCKS-TROLLEYS & WHEEL BARROWS



HEAVY DUTY FOLDABLE HAND TRUCK WITH GRIP

- Full capacity industrial steel frame body with side tpr grips for added protection to prevent scratches and damage.
- 4 nylon material swivel casters included for flexibility, durability and easy rotation.

HT17A-PT

150KGS / 1PC/CTN

HT18A-PT

300KGS / 1PC/CTN



3-PIPE FOLDABLE INDUSTRIAL HAND TROLLEY WITH GRIP

- Heavy - guage pipe structure in body provided for extra load when required.
- Sturdy wheels provided for usage in rough construction sites and roads.

HT19A-PT

Yellow

HT20A-PT

Red

HT21A-PT

Blue



HEAVY- DUTY STEEL FRAME WHEEL BARROW

- 1mm power-coated heavy gauge deep steel tray with full-sized reinforcing plate for added strength.
- Extra powder coating provided to avoid rust / corrosion, to assure a wrinkle- free.
- Reinforced steel front and back tray braces for added support and stability.
- Ball bearings for years of smooth performance and grease fittings for easy lubricating.

WBR26A-PT

13KG - 4.00-8 AIR TYRE
(40SETS/PALLET)

WBR27A-PT

13KG - 14"X4" SOLID TYRE
(40SETS/PALLET)



A-GRADE PNEUMATIC AIR WHEEL FOR WBR24A-PT WHEELBARROW

- The air in this tyre gives a smooth ride even when heavily loaded.
- The Tyres are made out of New Rubber Material to guarantee heavy usage and long durations
- The rims are powder coated to avoid rust.

TT34B-PT

3.50-8 (5PC / BAG)



A-GRADE PNEUMATIC AIR WHEEL FOR WBR24A-PT WHEELBARROW

- This tyre gives a smooth ride even when heavily loaded.
The Tyres are made out of New Rubber Material to guarantee
- heavy usage and long durations
- The rims are powder coated to avoid rust.

TT34B-PT

3.50-8 (5PC / BAG)



PINK COLOR RUBBER TUBE HIGH QUALITY

- This tyre gives a smooth ride even when heavily loaded.
The Rubber Tube are made out of New Rubber Material to guarantee
- heavy usage and long durations
- The rims are powder coated to avoid rust.

TT34B-PT

3.50-8 (5PC / BAG)



THE BRAND SAYS IT ALL



PERFECT TOOLS

Authorized Distributor



The Brand Says It All.